



98 Ryde Road Pymble NSW

4 2 1

This single level full brick home is ready to move in now yet holds potential to enhance further. The functional floorplan reveals an open plan living and dining zone which flows to an updated gas kitchen and through to the covered entertaining deck overlooking the established and secure back garden. High ceilings, polished hardwood floors and picture windows feature throughout providing an ideal foundation to add value. Conveniently located, with buses nearby to Gordon station and Macquarie business park, the home is also within the catchment for the highly sought after Gordon West Public School.

- Open home parking in Yarran Street
- Four oversized double bedrooms, three with built-ins

[For full version visit the website](https://www.lorimerestateagents.com.au/sale/nsw/north-shore-upper/pymble/residential/house/7647837)

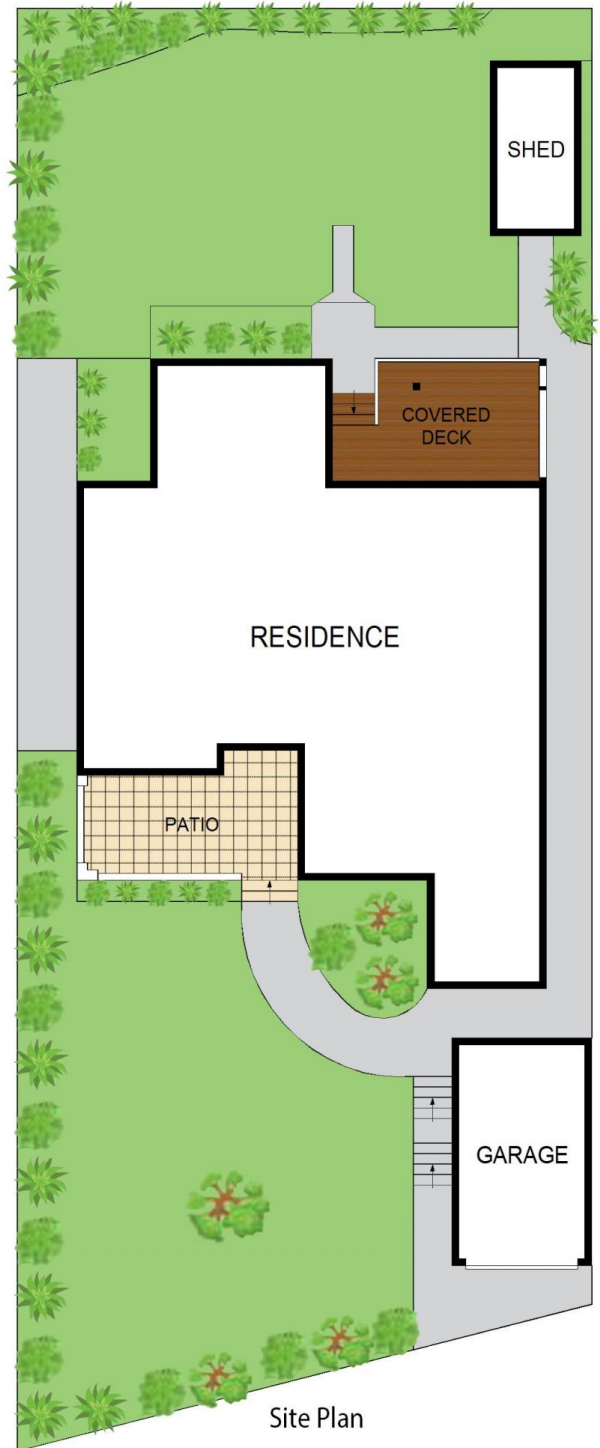
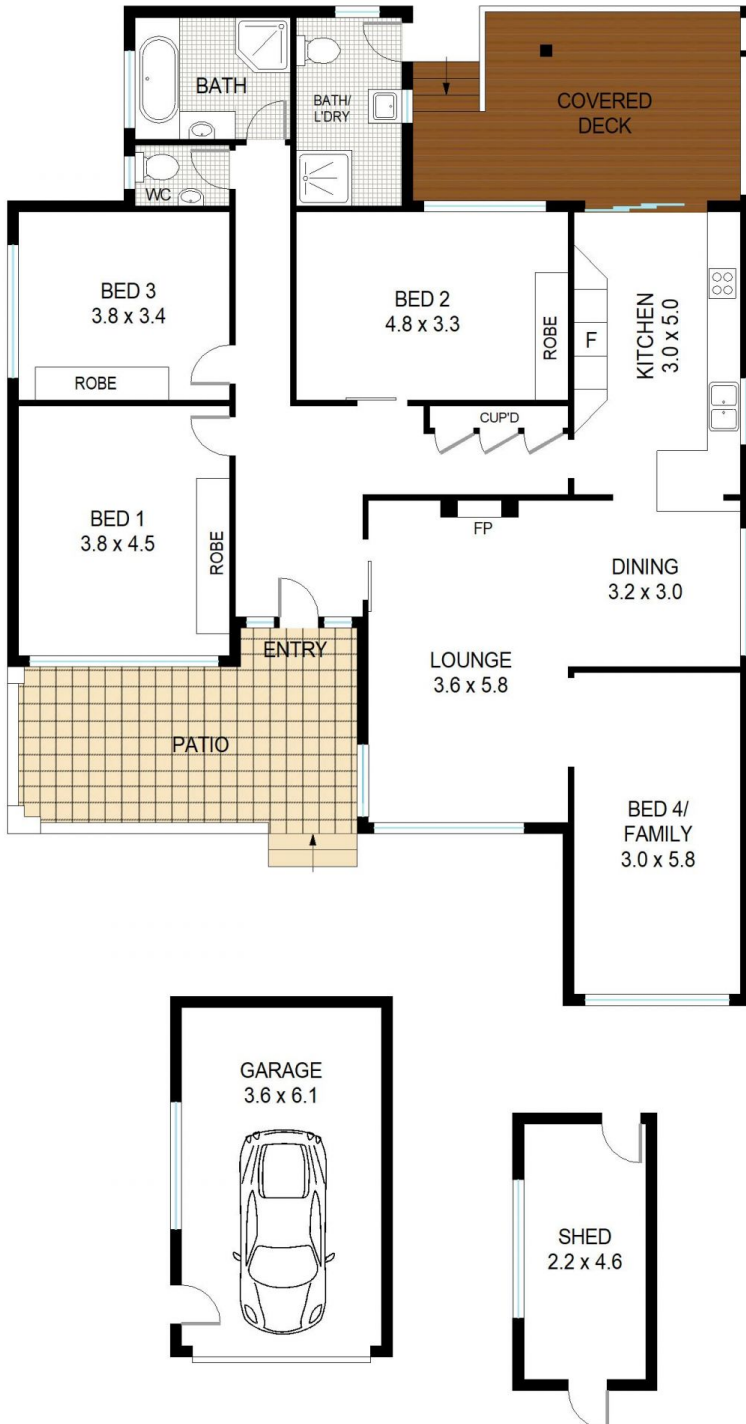
Type : House
Price : \$ 1,670,000
Land Size : 683 sqm
View : <https://www.lorimerestateagents.com.au/sale/nsw/north-shore-upper/pymble/residential/house/7647837>



Matthew Lorimer
0400 844 411



Lee Duffy
0400 844 411



INTERNAL AREA APPROX : 148m²

98 Ryde Road, Pymble

Measurements are approximate, Floor plan is indicative only, Floor plan for marketing purposes only