



8 Whian Road Eureka NSW

3  1  2 

The tiny sleepy village of Eureka sits in the heart of the beautiful hinterland of Byron Bay. It enjoys a feeling of being far away from the rest of the world, yet it is only a five minute drive to Federal village with its wonderful general store and bottle shop and great cafes, and 10 minutes to Bangalow with its cafes, shops, restaurants and pub.

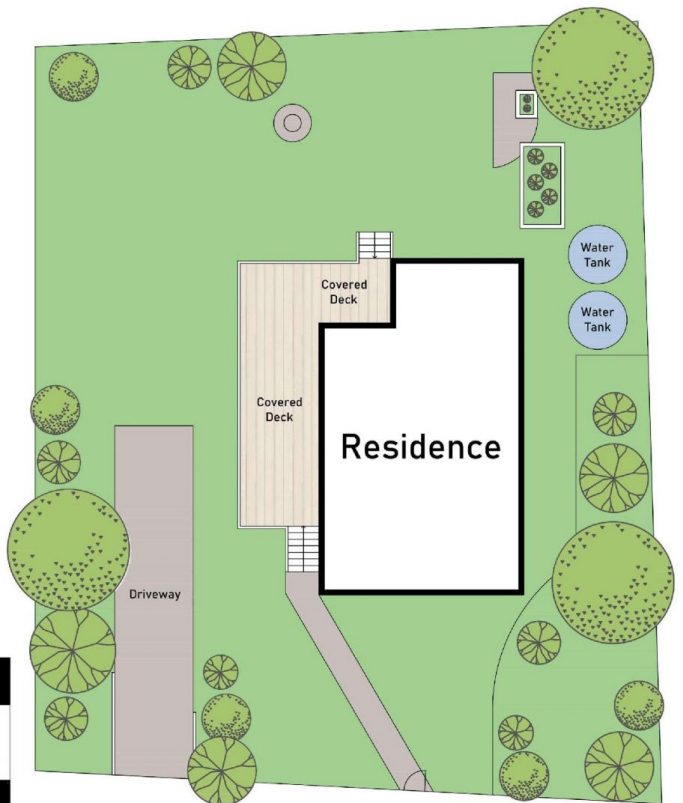
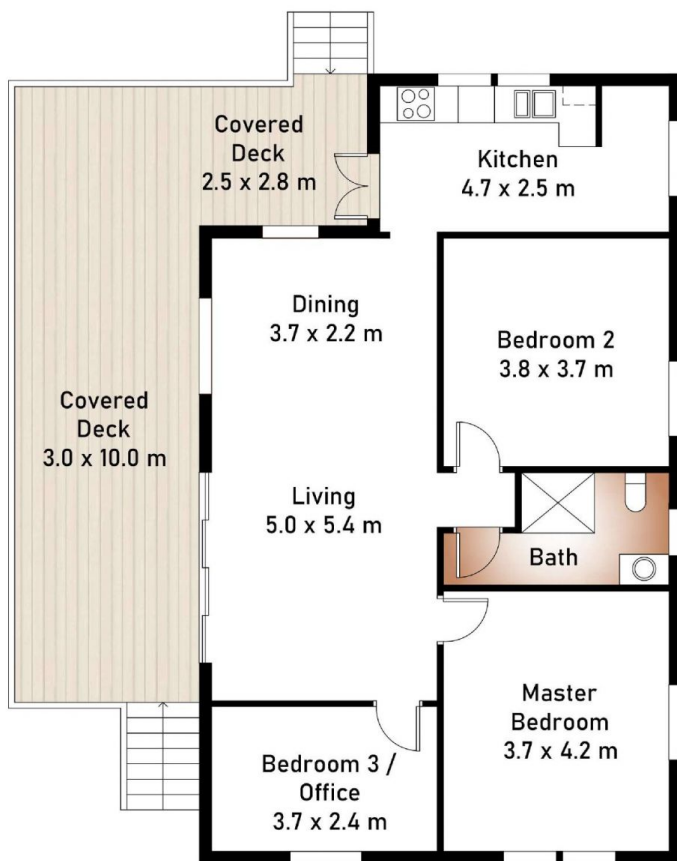
Nightcap Cottage is a little gem, so often sought but rarely found, nestled on a low maintenance residential sized 740sqm block with stunning, expansive views (almost 270 degrees) overlooking the lush rolling hills to Minyon Falls and Nightcap National Park. The views are captured from a large, covered wrap-around verandah which also provides an extended living and entertaining area.

Type : House
Price : Guide \$1,100,000
Land Size : 740 sqm
View : <https://www.lorimerestateagents.com.au/sale/nsw/northern-rivers/eureka/residential/house/8147346>



Duncan Lorimer
0400 844 411

[For full version visit the website](https://www.lorimerestateagents.com.au)



SITE PLAN

8 Whian Road, Eureka

Measurements are approximate. Floor plan is indicative only. Floor plan for marketing purposes only.

Internal	86m ²
External	36m ²
Total	122m ²
Land Size	739.8m ²

