




LORIMER

ESTATE AGENTS



55 Eureka Road Clunes NSW

3  2  3 

Historic 'Shildon', located on a picturesque near level 5 acres offers a reminder of past days by retaining many of its original features. French doors open to wide verandahs, 12 foot high ceilings, wide teak floorboards, white beech internal lining and red cedar features. The external walls are mixed hardwood with all timbers sourced from the old Clunes sawmill.

This homestead is set amongst lush, tropical landscaped gardens combined with level lawn areas bounded by dry stone rock walls and garden. They provide privacy and a welcoming and relaxing environment as well as a great place for parties.

There are several living and sitting areas, three double

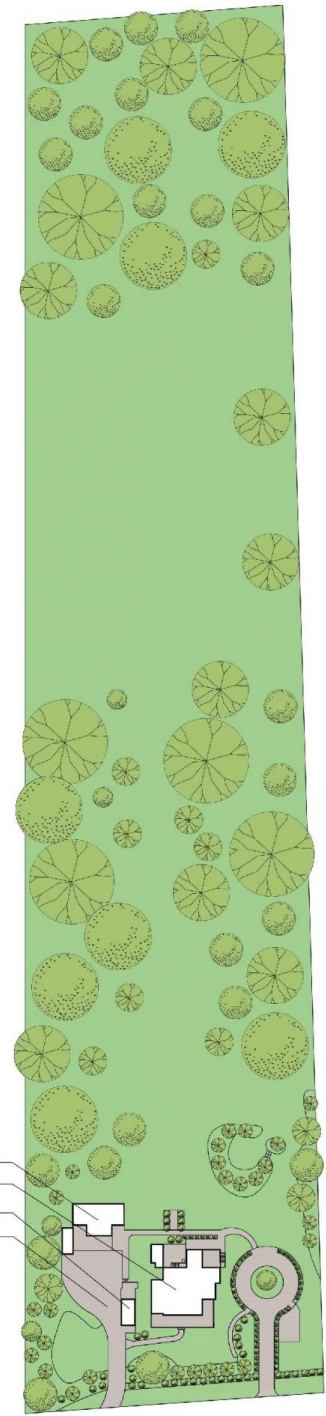
[For full version visit the website](https://www.lorimerestateagents.com.au/sale/nsw/northern-rivers/clunes/residential/house/8147735)

Type : House
Price : Guide \$1,950,000 - \$2,100,000
Land Size : 2 ha
View : <https://www.lorimerestateagents.com.au/sale/nsw/northern-rivers/clunes/residential/house/8147735>



Duncan Lorimer
0400 844 411

<https://www.lorimerestateagents.com.au>



SITE PLAN

55 Eureka Road, Clunes

Measurements are approximate. Floor plan is indicative only. Floor plan for marketing purposes only.

Internal	183m ²
External	260m ²
Total	343m ²
Land Size	2 Hectares (5 Acres)

